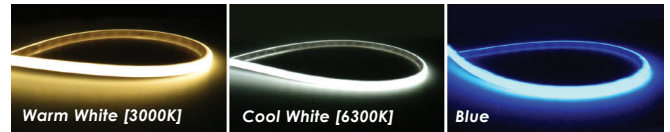
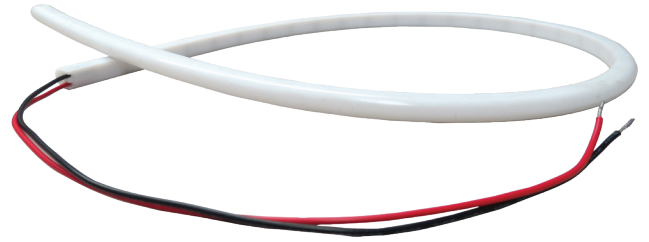


# Luna™

## Diffused Flexible LED Light

### Features

- Neon lighting-like illumination
- Soft and appealing light output
- Great for applications where spot-free illumination is required, like undercabinet applications to eliminate spots on the counter.
- Multiple color options available
- Standard IP66 rated and UV stable for installation in damp locations
- Dimmable with 0-10V or magnetic driver (MLV dimmer)
- Decorative end caps available for a more finished look
- Some options require a minimum order quantity. Please contact [eliosales@itc-us.com](mailto:eliosales@itc-us.com).



### Specification Guide:

**Sample Part #: RNLL2430.20012-10-6**

Base Part #	.....
Voltage	.....
Color Temp.	.....
Light Length	.....
Wire Length	.....
Light Width	.....
LED Chip Type	.....

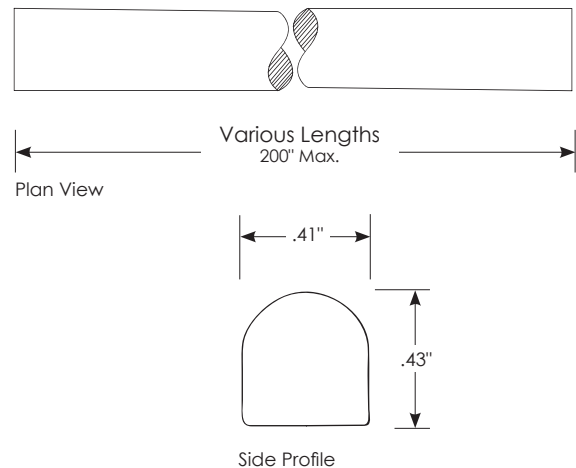
Base Part #	Voltage	Color Temp.	Light Length	Wire Length	Light Width	LED Chip Type
RNLL - Full Roll RNLLC - Custom Cut	24 - 24V 12 - 12V	27 - 2700K 30 - 3000K 35 - 3500K 41 - 4100K 63 - 6300K BL - Blue RD - Red AM - Amber	200 - 200 in. Max Length  - 24V cuts every 1.5 in - 12V cuts every 1 in	12 - 12 in. Standard Length	10 - 10mm (0.4 in.)	6 - High Performance (24V only) X - Standard Chips (12V & 2700K 24V Only)
<b>Note:</b> Contact sales for info on cut lengths. Cannot be field cut. Custom cuts will be cut as close to the specified length as possible, if exact length cannot be made, light will be cut to the closest cut line that is shorter than the specified length.						
IP67 Wire End Cap : 440-00335 / IP67 Finished End Cap : 440-00336						
Decorative Stainless Steel End Cap : RNLL-SS-CAP						
Decorative White Plastic End Cap : 810-00247 (For use in wood & fiberglass)						

### Product Details

Dimensions	.43" H x .41" W x Various L
Housing	Silicone
Wattage	4.4 Watts/Ft
Voltage	24V DC
Current	0.19 Amp/Ft
Lumens	360 Lm/Ft
Kelvin	2700 ± 120K, 3130K ± 30K, 3480K ± 60K, 4200 ± 30K, *Blue, *Red & *Amber
Beam Angle	120°
CRI	80+
Efficacy	90 Lm/W
Cut Increment	≈1.5"
LED Count	48 per foot
IP Rating	IP66 or IP67 (see spec guide)
Operating Temp.	14°F (-10°C) - 122°F (50°C)

\*Available by special order / \*\*Kelvin colors shown account for the color shift experienced by the diffused silicone sleeve

### Product Dimensions



Luna Patent Numbers: 9,695,991 | 2,861,157 | 9,909,719 ULE339122 V.2 S.2\*\*

## Accessory Specification

Description	Part #
Aluminum Straight Mount Track Without Tape	RNLL-1-72
Aluminum Straight Mount Track With Tape	RNLL-1T-72
Aluminum 45° Mount Track Without Tape	RNLL-2-72-CL
Aluminum 45° Mount Track With Tape	RNLL-2T-72
Aluminum Round Track, Diffused Lens (Mounting clips 810-00194)	810-00163-DF
Black Plastic Straight Mount Track Without Tape	RBLL-2
Black Plastic Straight Mount Track With Tape	RBLL-1
White Plastic Straight Mount Track Without Tape	RBLL-5
White Plastic Straight Mount Track With Tape	RBLL-4

\*96" track available, but is subject to a UPS surcharge

\*\*Additional track



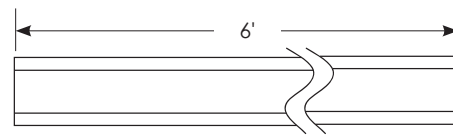
440-00335



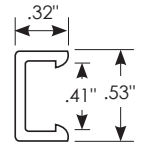
RNLL-SS-CAP



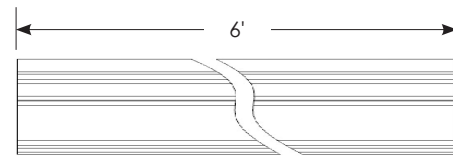
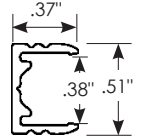
810-00247



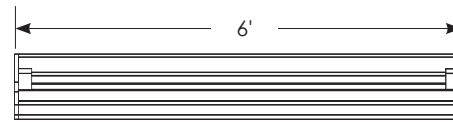
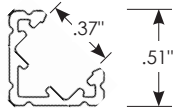
Plastic Track (RBLL)



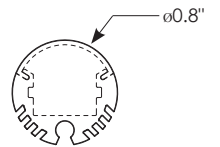
Aluminum Track (RNLL-1-72)



Aluminum Track (RNLL-2-72)



Round Track (810-00163-DF)



810-00163-DF

