

VersiColor™ RGBW LED Flexible Light

Product Details

- RGB chips provide an endless amount of color combinations, while white chip provides a high quality white
- The combination of RGB and White LEDs gives the user the ability to select a warmer or cooler white depending on preference.
- Ability to change colors instantly with a simple controller interface
- IP66 rating allows for installation in exterior or wet locations
- Flexibility allows for installation in curved applications as well as straight mount applications

Part Numbers

RBLL24RW.67012-12 : 24V Clear Sealed
RNLL24RW.20012-17 : 24V Diffused Sealed



**single addressability only*



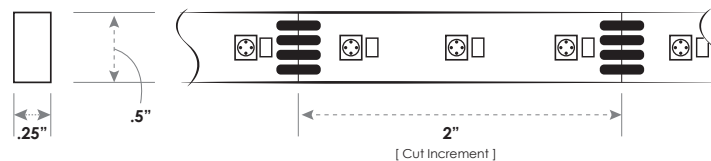
RBLL - 24V Clear Sealed



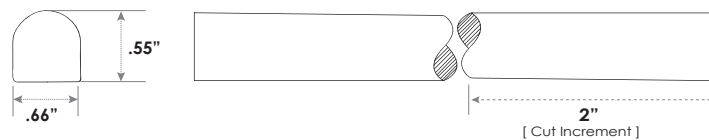
RNLL - 24V Diffused Sealed

Product Dimensions

RBLL RGBW



RNLL RGBW



Luna Patent Numbers: 9,695,991 | 2,861,157 | 9,909,719

Product Details

Type	24V Clear Sealed	24V Diffused Sealed
Housing Material	Silicone Casing	Silicone Mist Casing
Profile Dimensions	0.5" x 0.2"	0.66" x 0.55"
Total Wattage	3.5 Watts/Ft (11.5 Watts/Meter)	3.9 Watts/Ft (12.8 Watts/Meter)
Voltage	24V DC	24V DC
Current	0.1 Amp/Ft* (0.3 Amp/Meter)	0.2 Amp/Ft* (0.7 Amp/Meter)
Lumen Output	195 Lm/Ft (640 Lm/Meter)	145 Lm/Ft (475 Lm/Meter)
LED Color	RGBW	RGBW
Available Lengths	22 Ft (6.7 Meters)	16.7 Ft (5.1 Meters)
Wire Size	24 AWG	24 AWG
Beam Angle	120°	120°
IP Rating	IP66 Sealed	IP66 Sealed
UV	UV Stable	UV Stable

*Note, to protect against voltage fluctuations, estimate 0.3 Amps/Ft (1 Amp/Meter) when using VersiColor with RGB controllers

Specification Guide

A Determine the style of light needed

Sample Part #: RNLL24RW.20012-17

Silicone Type
 Voltage
 Light Style
 Roll Length
 Wire Length
 Flex Light Width

Silicone Type	Voltage	Style	Roll Length	Wire Length	Flex Light Width
RBLL - Clear Sealed	24 - 24V	RW - RGBW	670 - 670 cm (20 Ft) RBLL	12 - 12 in	12 - 12 mm
RNLL - Diffused Sealed			200 - 200 in (16.67 Ft) RNLL		17 - 17 mm

B Determine which mounting channel is needed

Sample Part #: RNLL17-6T

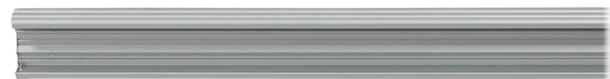
Compatible Light Type
Track Width
Color & Mounting Type



White Plastic



Black Plastic

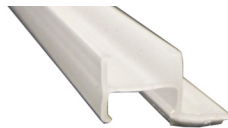


Aluminum



White Plastic Dual Mount

Dual Channel Side View



Track Type	RBL12 Clear Sealed	RNLL17 Diffused Sealed
LS - Black Plastic Screw Mount	√	
LT - Black Plastic Adhesive Mount	√	
6T - Black Plastic Dual Track Adhesive Mount	√	
6T - Black Plastic Adhesive Mount		√
5T - White Plastic Dual Track Adhesive Mount	√	
KS - White Plastic Screw Mount	√	
KT - White Plastic Adhesive Mount	√	
3S - Aluminum Screw Mount	√	√
7T - Aluminum Adhesive Mount	√	√
8T - Aluminum Screw Mount		√

Note, the width of the VersiColor flexible light corresponds with the width of the track, these widths must match for proper installation.

C Determine which power supply is needed

24V POWER SUPPLY

Standard hardwire use (non-dimmable)

Part Number	Power Supply Description	Dimensions
690010.081	20W Fulham electronic power supply	1.57"W x 6.3"L x 0.98"H
690010.035	60W Fulham electronic power supply	1.7"W x 9.5"L x 1.21"H
690010.082	60W Fulham electronic power supply (IP64)	1.7"W x 9.5"L x 1.22"H
690010.031	100W Fulham electronic power supply	1.17"W x 10.25"L x 1.21"H
690010.063*	320W MeanWell electronic power supply	3.5"W x 9.9"L x 1.7"H
690010.097*	600W MeanWell electronic power supply	5.7"W x 11"L x 1.9"H

For more information about power supplies visit: www.elio-itc.com/shop/24v-power-supplies/

*Outdoor Rated

D Specify the controller needed

Touch Sensitive Control Keypad | Part #: STICK-GU2

Package	Controller, CDRom, USB, Connector Block
OS Requirement	Mac OSx 10.6/10.7/10.8 Windows XP/Vista/Seven/8 32/64 Bit
Software	Easy Stand Alone, ESA2 (PC & Mac)
Connections	Power (2 pins) DMX (3 pins) Port (2 pins) Micro-USB
Power	5.5 - 12V DC, Max 5.5W w/ USB
Working Temp	0°F - 50°C
Dimensions	3.4"L x 3.4"W x 0.4"D
Weight (G.W.)	0.2 lbs



Constant Voltage Zone Receiver | Part #: R4-5A CV

Wireless Frequency	2.4GHz
Input Voltage	5 - 24V DC
Max Current Load	5A x 4CH Max 20A
Max Output Power	240W @ 12V DC 480W @ 24V DC
Remote Distance	160 Feet
Working Temp.	-20°C - 50°C
Dimensions	7"L x 1.7"W x 1.2"H
Weight	0.2 lbs



3CH CV DMX512 Decoder | Part #: LT-840-6A

Input Signal	DMX512
Input Voltage	5-24V DC
Max Current Load	4A x 3CH / Max 12A
Max Power Output	144W @ 12V DC 288W @ 24V DC
DMX512 Socket	Standard XLR-3, Green Terminal
Dimming Range	0 ~ 100%
Working Temp	-30°F - 65°C
Dimensions	5.3"L x 2.8"W x 2"H
Weight (G.W.)	0.7 lbs



RF RGB Remote Control | Part #: V3

Remote Option	RGB
Working Voltage	3V DC (Battery CR2032)
Wireless Frequency	2.4GHz
Input Voltage	5 - 24V DC
Remote Distance	100 Feet
Working Temp.	-20°C - 50°C
Dimensions	6"L x 1.8"W x 0.7"H
Weight	0.2 lbs



WiFi Lighting Control System Controller | Part #: WiFi-104

Communication	2.4GHz Wi-Fi, 802, 11b/g/n Protocol
Input Voltage	12 - 24V DC
Max Current Load	4A x 4CH Max 16A
Max Output Power	192W @ 12V DC 384W @ 24V DC
WiFi Control Distance	320 Feet
Working Temp.	-20°C - 50°C
Dimensions	5"L x 2.9"W x 1.8"H
Weight	0.6 lbs



DX Series Touch Panel | Part #: DX63

Input Voltage	100 - 240V AC
Output Signal	RF 2.4G + DMX512
Remote Distance	100 Feet
Control Mode	RGB
Working Temp.	-30°C - 55°C
Dimensions	4"L x 4"W x 2.4"H
Weight	0.5 lbs

